

## SON

### DIFFUSION

4 Audio-Performance SD-2  
2 Audio-Performance SUB-3  
2 Cerwin Vega CVA 118X  
1 Dbx 260 DriveRack  
3 Meyer MS-1000 Power Amplifiers  
4 RCF ART 300A [Monitors]  
1 RCF ART 200A [Monitors]

### TRAITEMENT DU SIGNAL

1 Allen&Heath GL2400 console 22+2/4/2 - 6aux [4 prefade-post eq / 2 postfade]  
1 TC Electronic M-One XL  
1 TC Electronic D-Two  
1 LA Audio EQ 231G [FOH]  
2 EQ Dbx 1231 [Monitors]  
1 Presonus ACP 88, 8 gate/comp  
2 Behringer Mdx 2100 Composer, dual gate/comp

### PRISE DE SON

1 Shure Beta 52A  
2 AKG C 430  
1 AKG C 1000 S  
3 Sennheiser e604  
2 Shure SM57  
2 Sennheiser e606  
3 Shure SM58  
1 Shure Beta 58  
1 DI Box Proel DB100 passif  
2 DI Box stereo Cordial CES 02 passif  
3 DI Box Bss ar133 actif  
1 Multi 24/4 on stage

### remarques

- console 22 xlr Inputs + 2 stereo In (FX Returns switchable on CD & Mp3)
- db limitation : 96 db (Ordonnance son et laser, OSLa du 28 févr 2007)

### contact

Nicolas Bourban – nbourban@hotmail.com - +41 76 408 53 54

## LIGHT

### CONTROL

x 1 dortron dlc-c001 (Avolite Pearl)

### DIMMING

x 2 dimmer 12 # 2/4K

x 3 dimmer 4 #

x 1 switch 4 #

### STAGE

x 6 par LED 64 54x3w RVBW

x 6 moving head 250

x 10 par 64 (white and 201)

x 4 bulbs stick (d.i.y. sunstrip)

x 2 halogens as blinder

x 2 pc

### FACE

x 3 pc

x 4 par LED 64

x 2 led scan

x stroboscope

### SOL

x 3 par 64

x 2 par LED 64

x 6 halogens behind the drummer

### DIVERS

x 1 hazer unique look v2.1 dmx

x 1 fan

x 1 mirror ball

### VIDEO

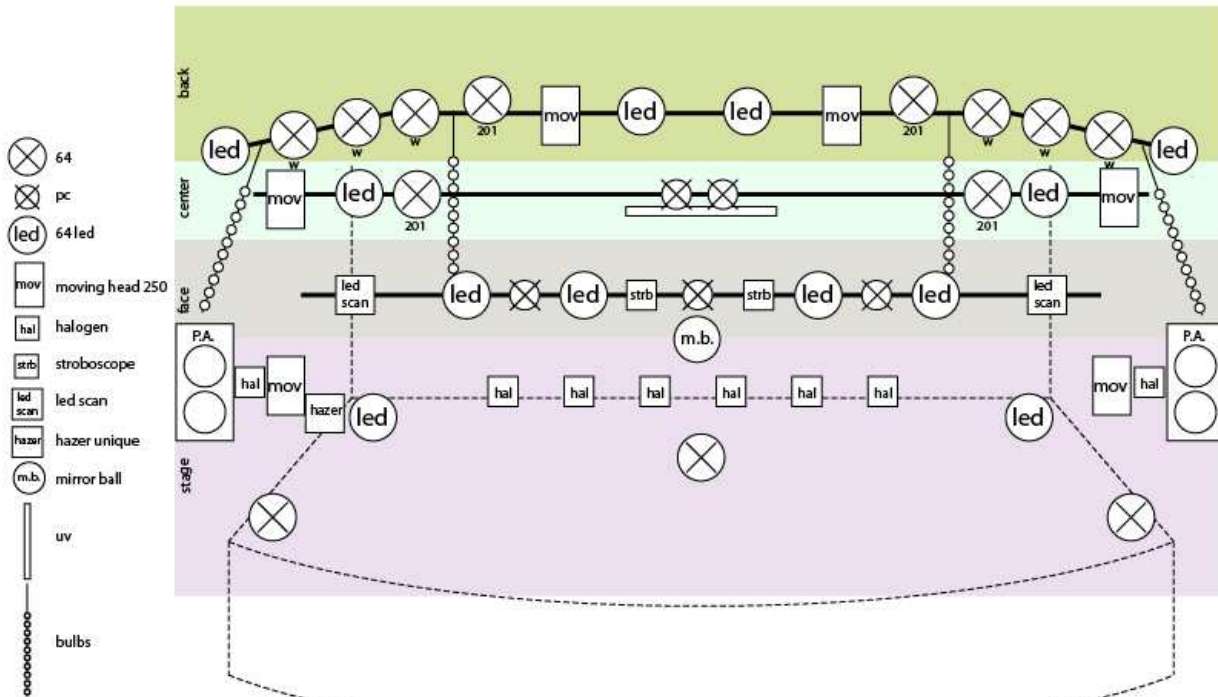
x 1 beamer (BNC at the f.o.h., RCA on stage)

x 1 screen (remote at the f.o.h.)

### contact

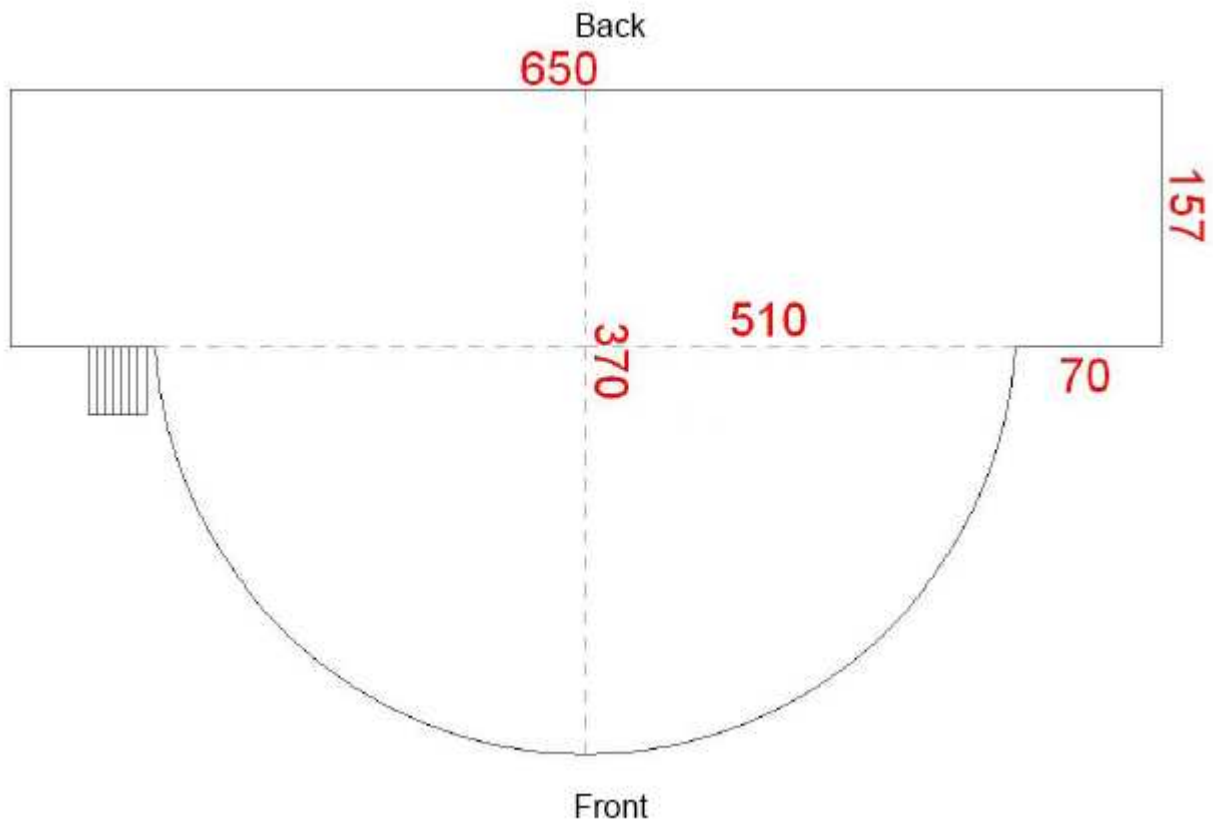
Jean-Etienne Bettler – aroomusic@gmail.com - +41 79 855 87 66

## LIGHT PLAN



Hacienda, Sierr, 2011  
lightdesign : Jean-Etienne Bettler  
aroomusic@gmail.com

**DIMENSIONS SCENE (cm)**



Haut. scène : 90  
Haut. sous spots : 360  
Capacité salle : 200